

THIS DRAWING AND THE INFORMATION CONTAINED ARE THE PROPERTY OF COSELLA DÖRKEN. THEY ARE NOT TO BE COPIED OR USED IN ANY WAY WITHOUT OUR WRITTEN PERMISSION

# COSELLA DÖRKEN

4655 DELTA WAY BEAMSVILLE, ON. L0R 1B4 CANADA  
TEL# 1-888-433-5824 OR 1-905-563-3255

THIS IS A PROPOSAL DRAWING. DO NOT USE FOR CONSTRUCTION UNTIL APPROVED BY CONTRACTOR OR CONSULTING ENGINEER

TITLE:

Typical DELTA@-DRAIN installation detail on poured concrete foundation wall

APP'D BY:

DATE:

DRAWN BY: KRZYSZTOF APRIASZ.

CHKD BY:

DATE: October 16, 2009

SCALE: NTS

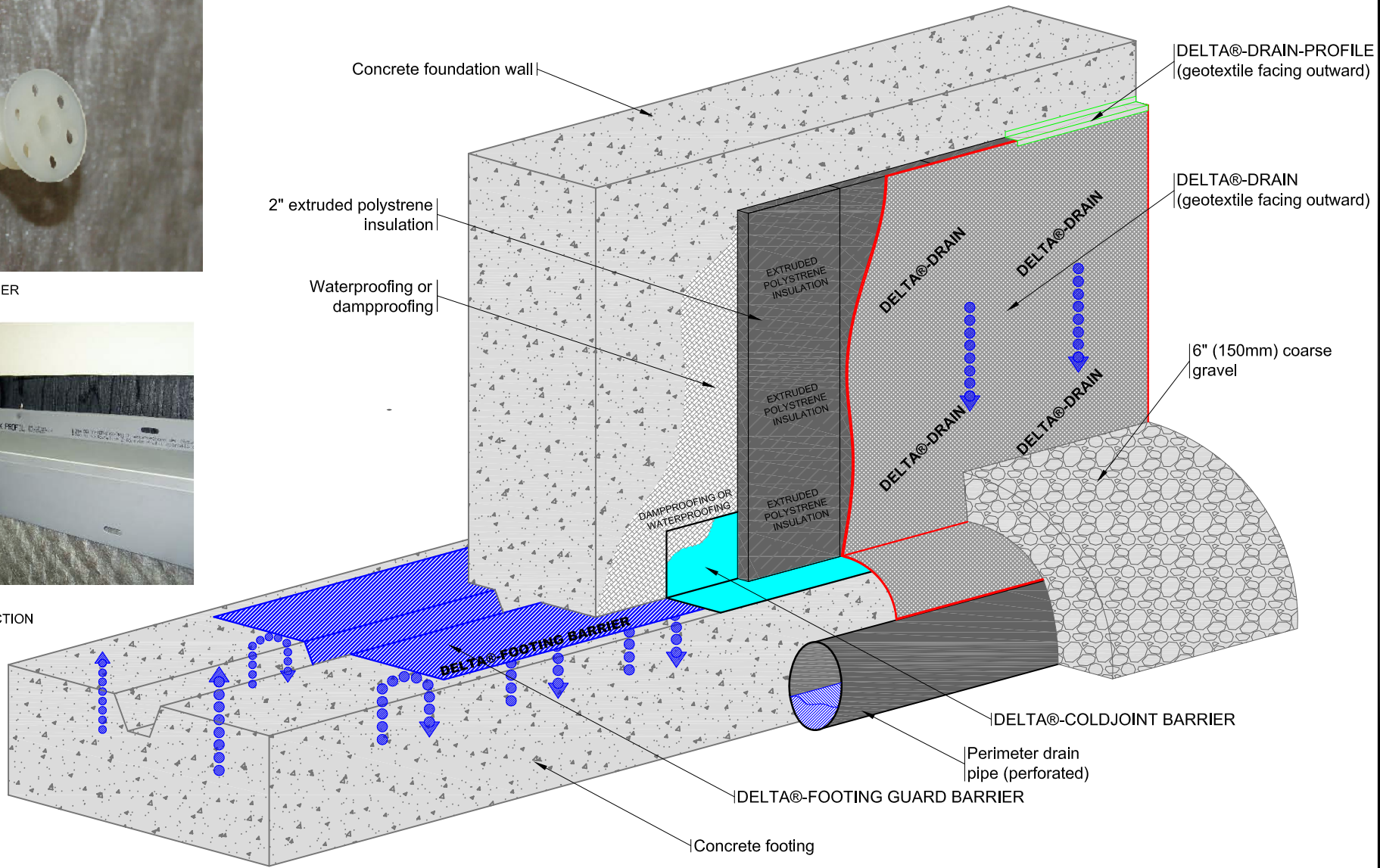
FILE NAME: DELTA-DRAIN1.dwg



DELTA@-SCREW FASTENER  
FASTENING ANCHOR



DELTA@-DRAIN PROFILE  
EDGE TERMINATION SECTION



THIS DRAWING AND THE INFORMATION CONTAINED ARE THE PROPERTY OF COSELLA DÖRKEN. THEY ARE NOT TO BE COPIED OR USED IN ANY WAY WITHOUT OUR WRITTEN PERMISSION

THIS IS A PROPOSAL DRAWING. DO NOT USE FOR CONSTRUCTION UNTIL APPROVED BY CONTRACTOR OR CONSULTING ENGINEER

APP'D BY: \_\_\_\_\_ DATE: \_\_\_\_\_

# COSELLA DÖRKEN

4655 DELTA WAY BEAMSVILLE, ON. L0R 1B4 CANADA  
TEL# 1-888-433-5824 OR 1-905-563-3255

TITLE:

TYPICAL WALL DETAIL WITH DELTA@-DRAIN / DELTA@-FOOTING BARRIER / DELTA@-FOOTING GUARD AND RIGID EXTRUDED POLYSTYRENE INSULATION

DRAWN BY: KRZYSZTOF APRIASZ.

CHKD BY:

DATE: October 19, 2009

SCALE: NTS

FILE NAME: DELTA-DRAIN2.dwg