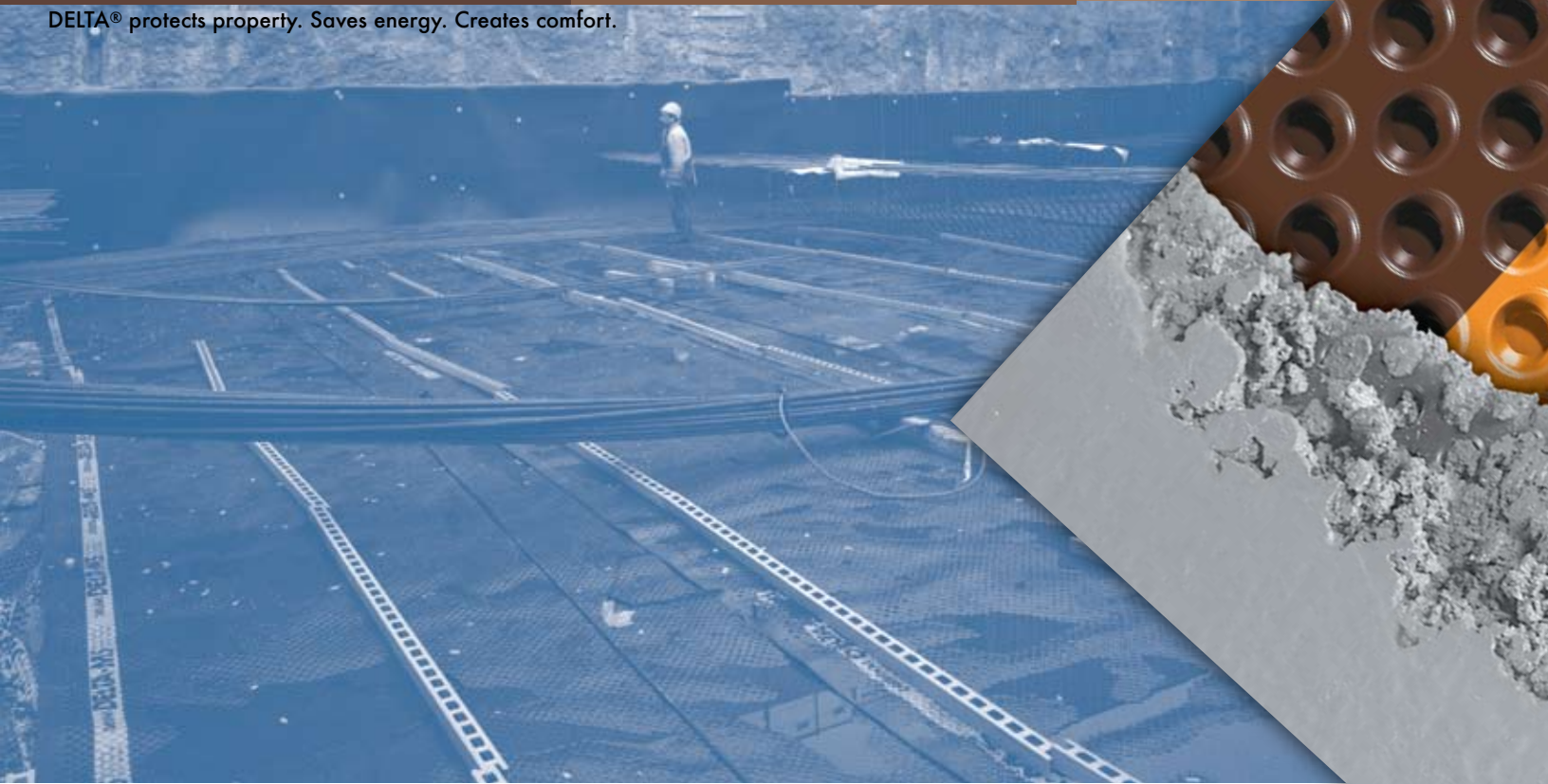


# DELTA®

DELTA® protects property. Saves energy. Creates comfort.



## DELTA®-MS UNDERSLAB

### Underslab Vapor Retarder.™

For concrete slabs on or below grade in residential and commercial construction.



PREMIUM QUALITY

■ Excellent capillary break and vapor retarder

■ For residential and commercial construction

■ For concrete slabs on or below grade

Material	High Density Polyethylene (HDPE)
Color:	Brown
Dimple Height:	5/16" (8 mm)
Working Temperature:	-22°F to + 176°F -30°C to + 80°C
Air-Gap Volume:	~ 0.13 gal./ft. <sup>2</sup> (5.3 litres/m <sup>2</sup> )
Compressive Strength:	~5200 psf (-250 kN/m <sup>2</sup> )
Water Flow Rate (V)(GR=1):	12 gal/min/ft (149 L/min/m)
Water Flow Rate (H)(GR=0.1):	3.5 gal/min/ft (44 L/min/m)
U.V. Stability:	Good
Bacteria Attack:	Unaffected
Toxicity:	Non-toxic, Non-polluting
Freeze Thaw Cycle:	Unaffected
Service Life Expectancy:	The Life Of The Structure
Roll Sizes:	3.5'(1.07m) x 65.6'(20m) 5.0'(1.52m) x 65.6'(20m) 6.0'(1.83m) x 65.6'(20m) 6.6'(2.00m) x 65.6'(20m) 7.0'(2.13m) x 65.6'(20m) 8.0'(2.45m) x 65.6'(20m) 9.8'(3.00m) x 65.6'(20m)

DELTA®-MS can be used as an underslab vapor retarder layer for concrete slabs on or below grade in residential and commercial environments. DELTA®-MS UNDERSLAB acts as a tough membrane impermeable to water and vapor, that is placed on the earth or granular prior to placing the concrete. It will not tear or rupture allowing normal concrete placing.

### Function

DELTA®-MS UNDERSLAB prevents early loss of hydration water, thus producing a concrete that meets design strength, and provides more even curing characteristics in concrete.

DELTA®-MS UNDERSLAB offers a full capillary break. As a vapor retarder DELTA®-MS UNDERSLAB prevents the upward migration of moisture through the capillaries that exist in all concrete. This benefits the contractor and owner by providing a healthy dry environment. Additionally DELTA®-MS UNDERSLAB can act as a barrier to soil gases.

### Residential/Commercial Construction

DELTA®-MS UNDERSLAB is placed on the soil or granular prior to the concrete pour.

DELTA®-MS UNDERSLAB is suitable for residential and commercial construction.

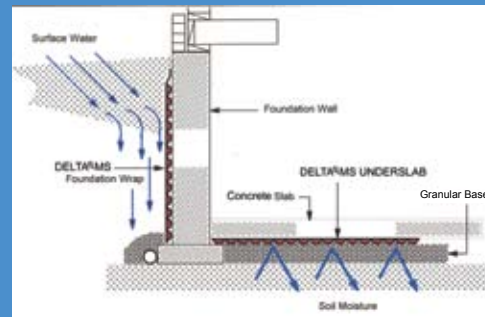
### Benefits

- Acts as concrete waterproofing and vapor retarder
- Will not deteriorate when in contact with earth or concrete
- Tough and tear resistant
- Creates a full capillary break
- Helps to reach concrete's design strength by eliminating bleed water loss. Note: w/c ratio should be kept at .45 - .50

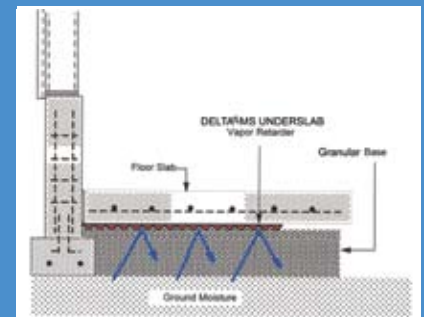
### Advantages

- Allows for full hydration of concrete
- Creates a healthy and comfortable living environment
- Functions for the life of the structure
- Protects floor finishes from damage due to rising dampness
- Ensures sound bonding of adhesives to the concrete floor

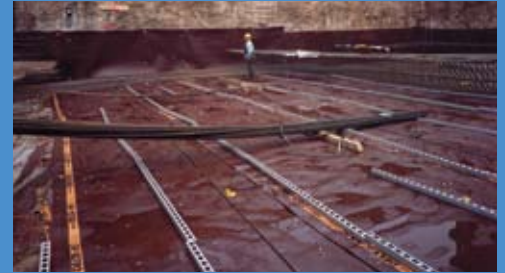
# DELTA®



RESIDENTIAL



COMMERCIAL



**COSELLA DÖRKEN**  
 Cosella-Dörken Products Inc.  
 4655 Delta Way  
 Beamsville, Ontario  
 L0R 1B4  
 (905) 563-3255  
 Fax: (905) 563-5582  
 1-888-4 DELTA 4  
 info@cosella-dorcken.com  
 DELTAMS.com

A company of the Dörken Group

The information printed in this brochure reflects product information and specifications at the date of printing. The manufacturer reserves the right to make changes when necessary.



DELTA®-branded quality products manufactured by Cosella-Dörken.